



jordanfishwick

The Vaults
Northern Quarter



The Property

Available NOW!!! 6 MONTH RENTAL ONLY

Spacious One bedroom studio apartment (corner position on ground floor) is located in the highly sought after Northern Quarter of Manchester's City Centre. The Vaults (a former Victorian Bank Vault) combines classic Victorian warehouse architecture with an elegant contemporary style. A great opportunity for spacious city living. The original safe door has been preserved (in hallway). This spacious studio flat boasts original features: exposed brickwork and steel columns. It also benefits from secure communal entrance, wall-mounted video intercom, wall-mounted storage heaters, heated towel rail, off-set dining or study space and glass-block feature.

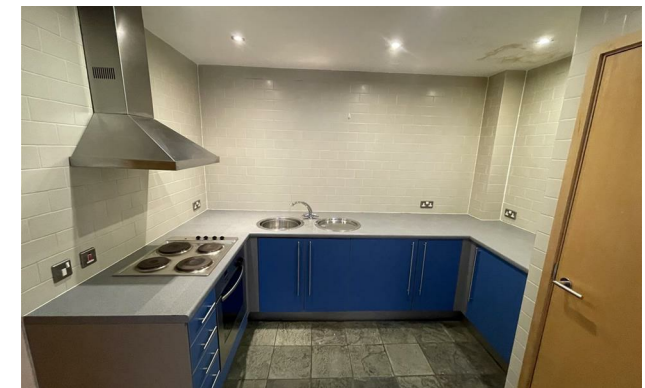
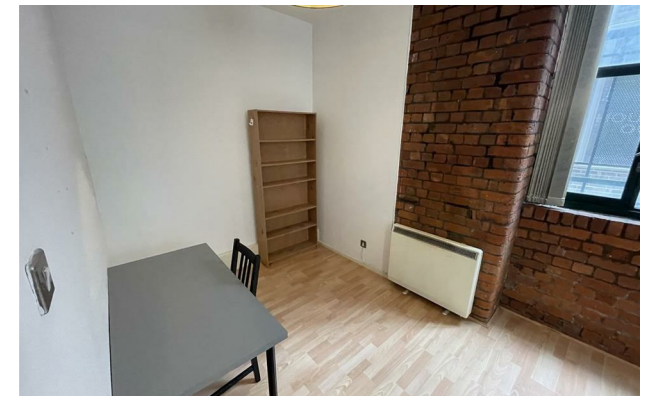
The kitchen is open plan to the lounge. It has slate tile flooring, low voltage down lighters, fully integrated appliances, including hob, oven, extractor hood, washer/dryer and fridge. There are three double glazed multi paned windows to Tariff Street elevation. The apartment is just a stones throw away from Piccadilly station and well located for shops, bars, restaurants and other transport links.

The Vaults also has its own inter-apartment chat room forum for residents. FULLY FURNISHED- NO PARKING

Directions

The Vaults Northern Quarter M1 2FF

£1,150 Per Calendar Month



- Available NOW
- One Bedroom/Studio Apartment
- Ground Floor
- NORTHERN QUARTER location
- Fully Furnished
- Close to Piccadilly Station

Postcode - M1 2FF

EPC Rating - E

Floor Area - sq ft

Local Authority - Manchester

Council Tax - D



GROUND FLOOR



Measurements are approximate. Not to scale. Illustrative purposes only.
Made with Metropix ©2023



These particulars are believed to be accurate but they are not guaranteed and do not form a contract. Neither Jordan Fishwick nor the vendor or lessor accept any responsibility in respect of these particulars, which are not intended to be statements or representations of fact and any intending purchaser or lessee must satisfy himself by inspection or otherwise as to the correctness of each of the statements contained in these particulars. Any floorplans on this brochure are for illustrative purposes only and are not necessarily to scale.

Offices at: Chorlton, Didsbury, Disley, Hale, Glossop, Macclesfield, Manchester Deansgate,
Manchester Whitworth Street, New Mills, Sale, Wilmslow and Withington

68 The Arches, Whitworth St West, Manchester, M1 5WQ

0161 833 9499 opt 2

manchester@jordanfishwick.co.uk

www.jordanfishwick.co.uk